

Hello

I am having ENORMOUS problems with cmdline

This is my code:

Convert Variable CMDLINE to UPPER case

if Variable CMDLINE Contains SERVER

Set Variable SERVER_SETTINGS_FILE_DIR to \$SERVER\$

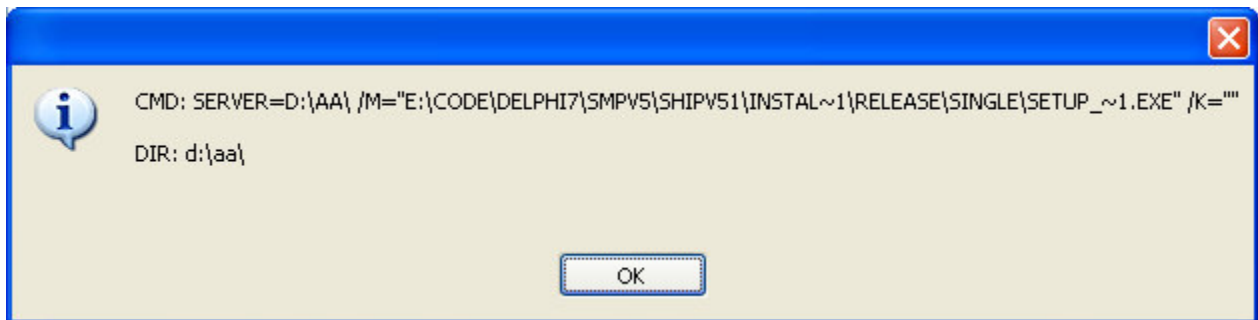
MessageBox: , CMD: \$cmdline\$\$NEWLINE\$\$NEWLINE\$DIR:
\$SERVER_SETTINGS_FILE_DIR\$\$NEWLINE\$\$NEWLINE\$
end

If I run from the exe file with properties:

E:\CODE\delphi7\smpV5\shipV51\installAware\Release\Single\setup_stopmotionpro.exe

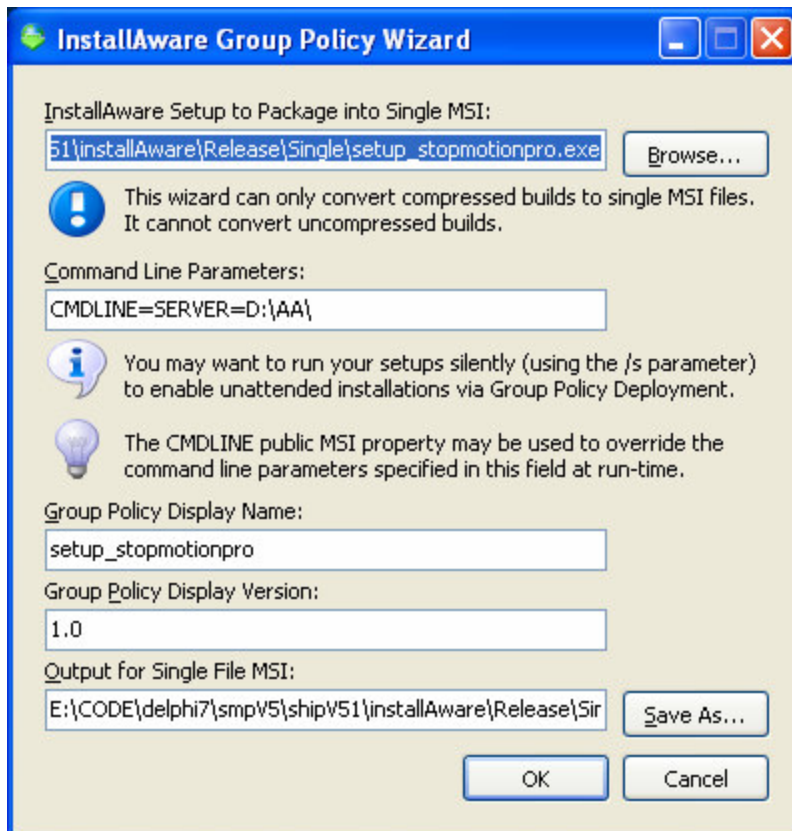
SERVER=d:\aa\

I get the following:



This is what I expect.

I then use the Group wizard to create the MSI:



This results in:



Please advise how I get he MSI to transfer the actual data assigned to the SERVER variable

Regards

ross